



Operating System: *Windows XP\Vista* > Outlook Version: *Outlook 2007*

## **Setup Outlook 2007 over HTTP for Windows XP/Vista (mse5 forest)**

### **Overview**

If you have Windows XP/Vista, you can now configure Outlook 2007 to connect to MailStreet over the internet when behind a firewall or cable modem without the need to use virtual private network (VPN) connections. This feature – connecting to an Exchange account by using Remote Procedure Call (RPC) over HTTP – allows Outlook 2007 to connect to the MailStreet system securely while getting around blocked ports (i.e. port 135, etc) that many ISPs and Firewalls block.

Note: This connection method is via HTTPS and is encrypted by 128-bit SSL.

### **Requirements**

- Outlook 2007 (Available for no license fee from MailStreet)
- Windows XP with Service Pack 1 or higher installed (go to <http://windowsupdate.microsoft.com> to find out if you need service pack 1. NOTE: Windows 2000/Me/98 will not work). **Service Pack 2 is highly recommended.**

**NOTE:** In the following instructions, when the following box appears, follow the sign in instructions below. Depending on your network and firewall settings, this box may appear more than indicated.



**\*\* IMPORTANT – SIGN IN AS FOLLOWS \*\***

**User name:** mse5\username (see MailStreet Welcome Letter)

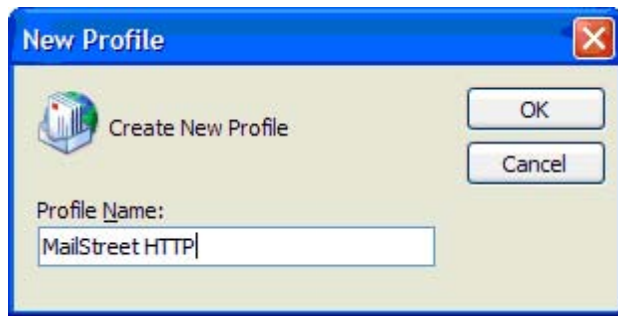
**Password:** <your MailStreet password here>

where username is the “short” version of your username. Normally this is the first part of your email address before the “@” symbol but it may be different. If you are unsure of your username, ask your administrator or contact MailStreet support. (**mstest** used in this example)

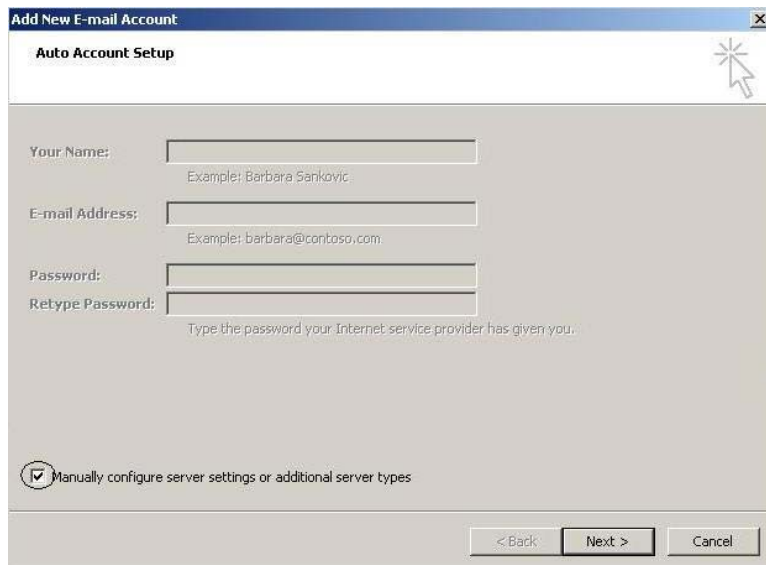
NOTE: the username@domain syntax may appear to work correctly in this step but will actually not let Outlook to launch properly later on.

### **Setup Outlook 2007 over HTTP**

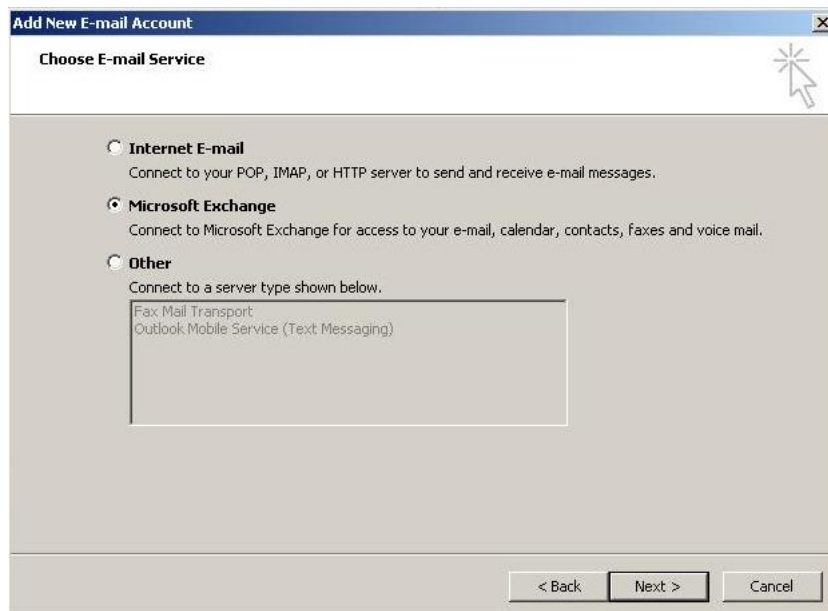
- 1 Create a new Outlook 2007 profile.
  - a. Go to Start and Control Panel
  - b. Launch the “Mail” applet
  - c. Click “Show Profiles”
  - d. Add a new Profile
  - e. In the Profile Name – Enter “MailStreet HTTP” & click OK



2. In the following box, check "Manually configure server settings..." and click Next



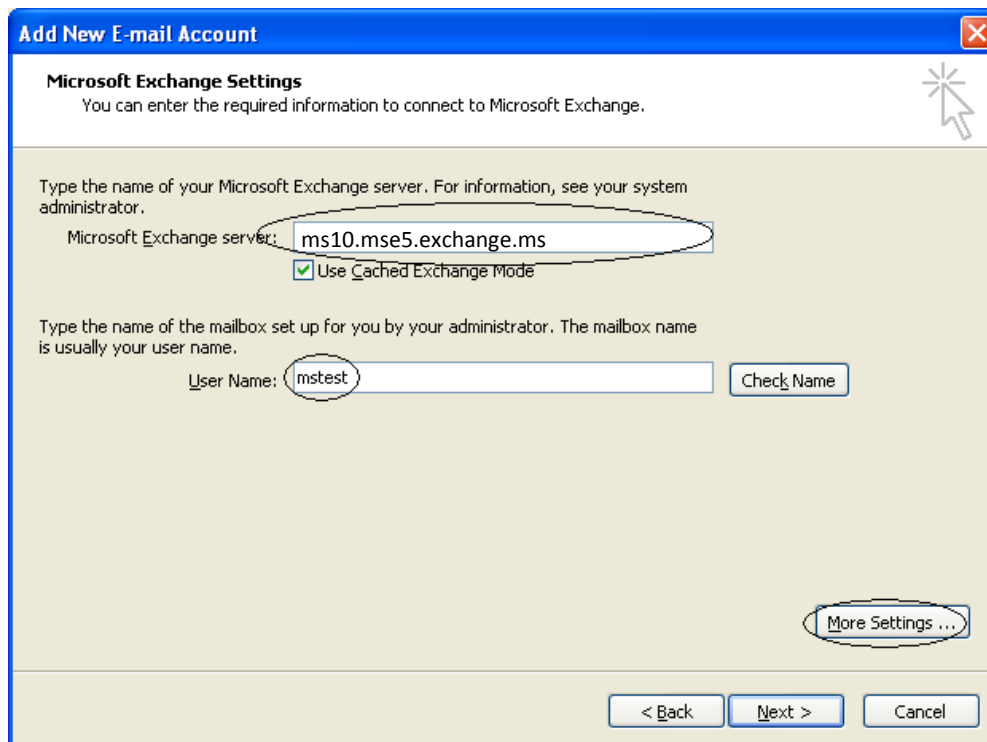
3. In the following box, choose Microsoft Exchange & click Next



4. Enter the Microsoft Exchange server address of:

**ms10.mse5.exchange.ms**

**DO NOT CLICK CHECK NAME AT THIS TIME.**



5. Enter your User Name (see MailStreet Welcome Letter). Click the "More Settings" button. If you are behind a firewall or using a cable modem your window may hang for 60 seconds or more. Please be patient (even if it says "not responding") as the Outlook profile is trying to find a way to connect to the MailStreet system. After about 60 seconds it will time-out and return an error that says the "action could not be completed." This is OK. If it does not hang, skip to step 7 and other steps will not be necessary as well.



If you get this error, this is fine. Hit OK...then you will see the following window:

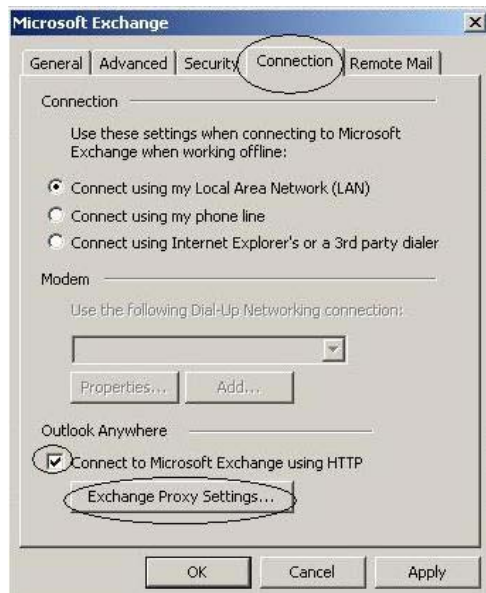


Click "OK" and then the Microsoft Exchange" settings should appear.

6. Click the Security tab & change the Logon network security field to **Password Authentication** (NTLM).



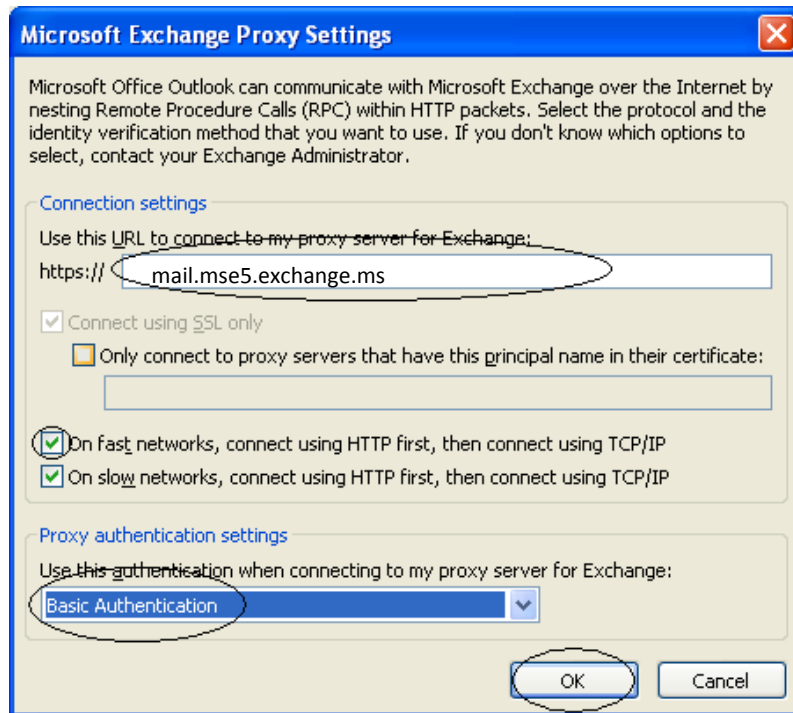
7. Click the Connection tab, check Connect to Microsoft Exchange using HTTP and click Exchange Proxy Settings.



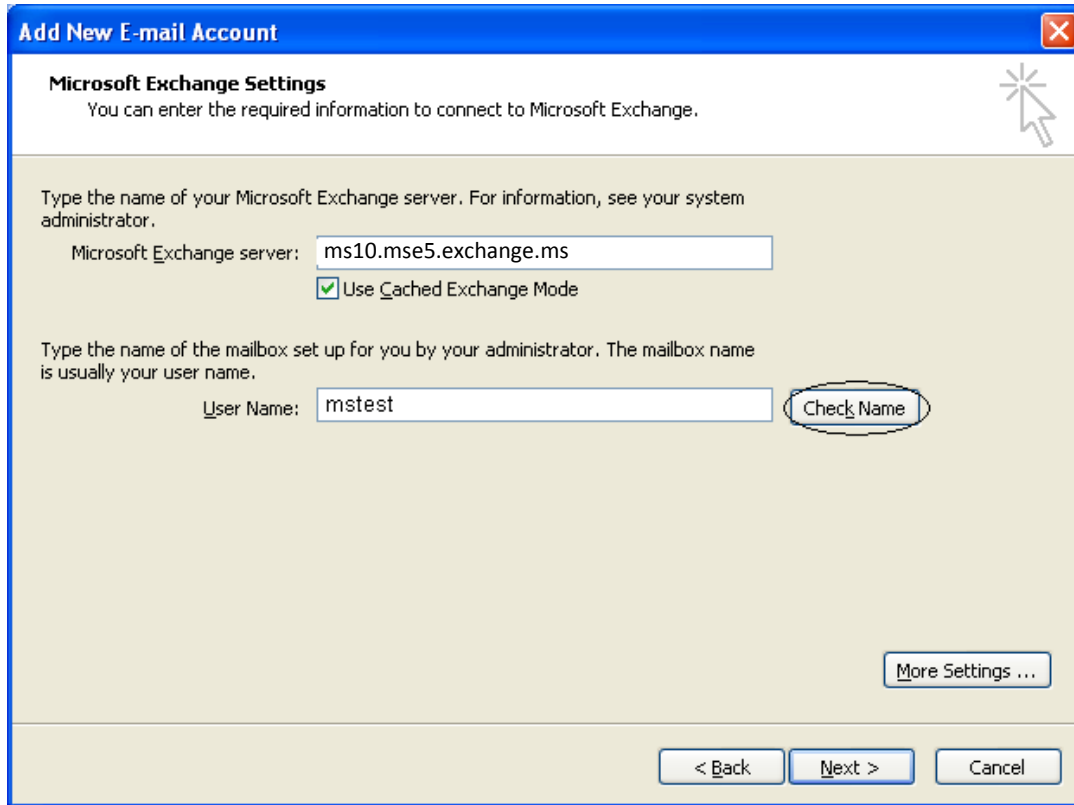
8. Enter the Proxy Server:

**mail.mse5.exchange.ms**

Then, check "On fast networks..." and change the Proxy authentication settings to **Basic Authentication** and click OK. Click OK again to complete the "Microsoft Exchange" window.



9. The following window will appear. Make sure "Use Cached Exchange Mode" is checked. click the "Check Name" button.



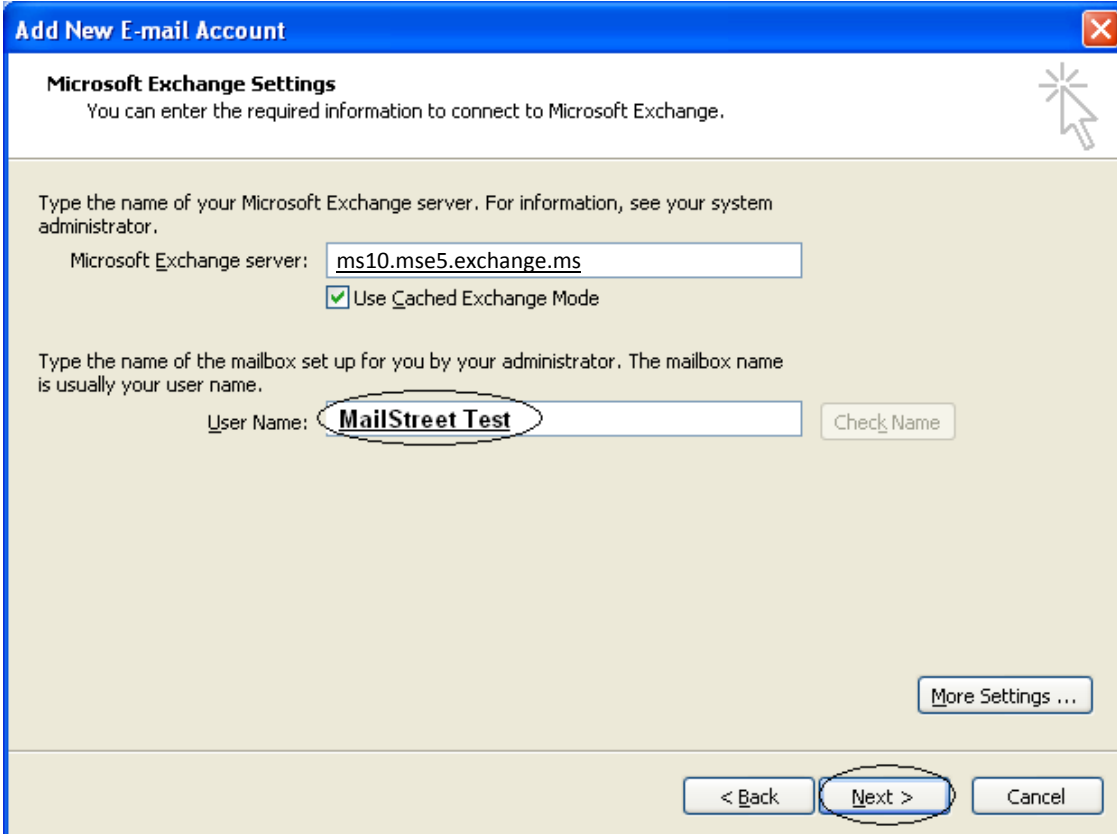
If all goes well, you should get the “Connect to ms10.mse5.exchange.ms” login box: (if it changes servers, that is OK)



**\*\* IMPORTANT – SIGN IN AS FOLLOWS \*\***

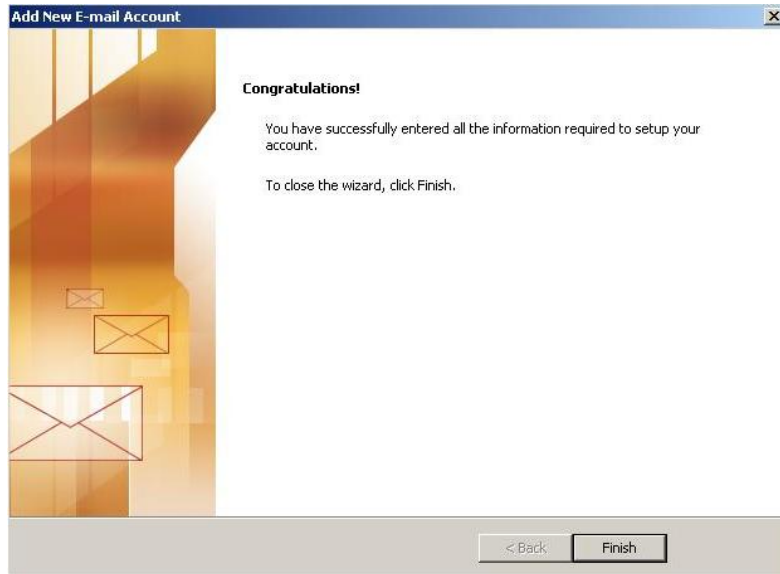
User name: mse5\username (see MailStreet Welcome Letter)  
Password: <your MailStreet password here>

10. The following box should now appear and you should see your Display Name in its entirety underlined. Click Next.



The screenshot shows a Windows dialog box titled "Add New E-mail Account" with a blue header bar. Below the header, the section is titled "Microsoft Exchange Settings" and includes the instruction: "You can enter the required information to connect to Microsoft Exchange." There is a mouse cursor icon in the top right corner of the main content area. The first section prompts the user to "Type the name of your Microsoft Exchange server. For information, see your system administrator." The "Microsoft Exchange server:" text box contains "ms10.mse5.exchange.ms" and the "Use Cached Exchange Mode" checkbox is checked. The second section prompts the user to "Type the name of the mailbox set up for you by your administrator. The mailbox name is usually your user name." The "User Name:" text box contains "MailStreet Test", which is underlined. To the right of this text box is a "Check Name" button. At the bottom right of the main content area is a "More Settings ..." button. At the bottom of the dialog box are three buttons: "< Back", "Next >", and "Cancel". The "Next >" button is circled in red.

11. Click Finish.



In the following box, you can select to always open the newly created profile or prompt for profile to be used when Outlook is launched.

